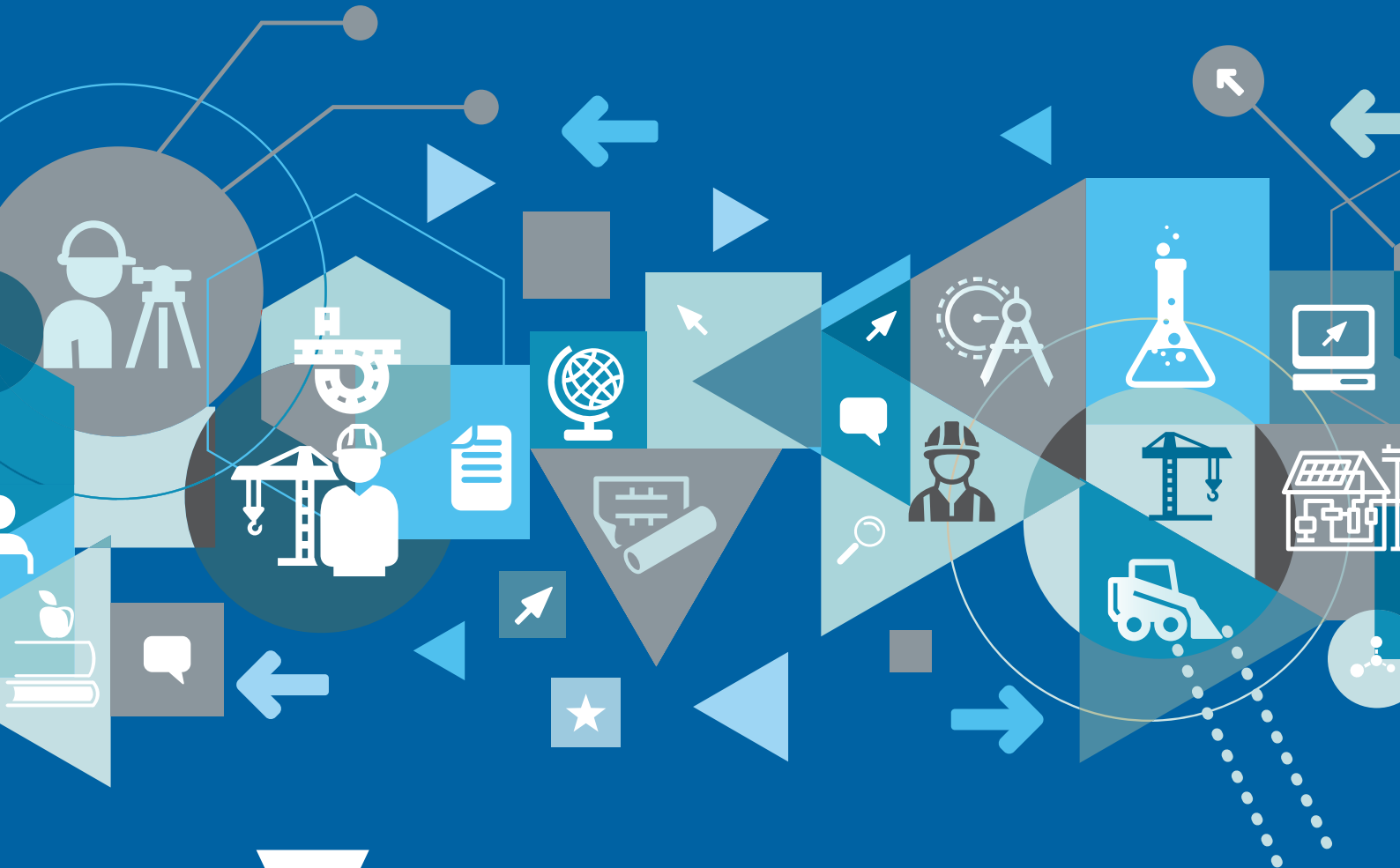


holmesglen

**Holmesglen Centre for Applied  
Research and Innovation**

# Holmesglen Research 2022



**TAFE VICTORIA**



**Holmesglen Centre for  
Applied Research and Innovation**

# Holmesglen Research 2022

## Contents

- 4 From the Director
- 5 Holmesglen Research Initiatives: selected highlights
- 5 Health Industries: a vibrant research programme
- 7 Leading edge research and the B4.0 Co-operative Research Centre
- 8 Other CRC research developments
- 8 Construction initiatives in the Building Construction Trades Department:  
apprenticeship training
- 9 Faculty based research
- 10 Creative Works
- 10 Establishing a research profile: Holmesglen participation in conferences, 2022
- 11 OctoberVET: part of the research landscape
- 13 Conference presentations
- 14 Published Research
- 16 The Holmesglen Human Research Ethics Review Panel (HRERP)  
and theses passed for higher degrees
- 17 Research supervision
- 18 Contact us



## From the Director

**Dr Henry Pook**

Director, Centre for Applied Research and Innovation

### Welcome to Holmesglen Research 2022, a report compiled by the Centre for Applied Research and Innovation ('the Centre') to recognise the individual and combined achievements of Holmesglen research during 2022.

In our 2021 report, I reflected on the effects of the pandemic on our research programme and how this had presented great challenges, yet also opportunities, for our research.

Indeed, as testimony to the strength of our research programme and the capability of our researchers, 2022 saw a year of significant achievement with many of these challenges being met; our individual researchers also broadened the scope of their research, engaging with researchers from other institutions and expanding the range and number of academic publications.

This report covers a period of new achievement in what has become a changed research landscape. Faculties, training centres and 'the Centre' have worked closely together in establishing exciting new research initiatives and supporting the further development of a resilient research culture at the Institute. This has resulted in a range of innovative research projects in co-operation with industry and community, the engagement of Holmesglen researchers in capability building, and the showcasing of our research across the vocational and professional education and training sector through several events.

During 2022 'the Centre' continued to provide critical support for projects in an enabling capacity. This support ranged from strategy development, partnerships and stakeholder relationships to research ethics and integrity, and support for the sourcing of funding for current and proposed projects.

There is a great deal to celebrate for Holmesglen research, and this report provides a glimpse into the outstanding work being done by our researchers and research partners. Working in collaboration with industry, government, and community, they have contributed a great deal to building a TAFE profile for Holmesglen in applied research and innovation.

**This digital report provides you with an overview of Holmesglen's research performance during 2022. You will find information about our research projects, our research engagement with industry and community, and the development of our research capability.**

Education Methodology  
 Training Technology Theory  
 Applied New Researchers  
 Practice Academic  
 Community **Research**  
 Knowledge Problems Basic  
 Projects **Methods** Solutions  
 Organisations

## Holmesglen Research Initiatives. Selected highlights:

### Leading the way

Holmesglen Institute is a recognised leader in applied research and innovation across the TAFE sector. Its growing profile has been enhanced through the Institute's active involvement in sector-wide activities designed to support the consolidation of applied research in vocational institutions. This has included membership of the Victorian TAFE Association's 'Research and Advocacy Committee', Dr Ross Digby's role as Skills and Training Leader, B4.OCRC, close co-operation with industry, and further collaboration with VET based research organisations. During the 'pandemic years' and beyond, the Centre developed and hosted nationwide OctoberVET conferences: *Applied Research in TAFE during a time of pandemic: the importance of industry partnerships (November 2020)*; *Applied Research in TAFE: current practice and future opportunity (October 2021)*; and *Conducting Applied Research: an invitation to researchers in TAFE (October 2022)*.

Holmesglen has led the way in developing research opportunities through some successful partnerships with industry in the fields of health industries related research, the building construction industry, and VR (virtual reality) related research and innovation.

Important pillars supporting these new directions and innovations in applied research have been faculties and centres such as **Faculty of Health Sciences, Youth and Community Studies and the Healthscope Clinical Chair, the Centre for Energy & Infrastructure, and the Holmesglen Centre for Applied Research and Innovation.**

Holmesglen's has also established an international research presence through Andrew Williamson's role as Co-leader of the Applied Research and Innovation Affinity Group of the World Federation of Colleges and Polytechnics (WFCP). This international community of practice enables the sharing of applied research practices, as well as an opportunity for the 'knowledge transfer' of outcomes from applied research and innovation projects.

### About the Holmesglen Centre for Applied Research and Innovation.

Established in 2016, the Holmesglen Centre for Applied Research and Innovation is a significant driver of industry based research and supports the development of an applied research culture at Holmesglen. Its core function has been to raise the profile of research across faculties and training units and to assist in the development of applied research and innovation projects involving Holmesglen researchers; its focus has been on projects, partnerships, and participation.

To achieve this, the Centre has worked towards building the capability of researchers in the Institute; to focus on an inquiry-based approach in our training and education programmes and to ready our learners and trainees for an increasingly digitalised world. It is also cognisant of the need to embrace industry and form partnerships and develop collaborations: in particular, to support engagement with the range of industries linked to Holmesglen through applied research that not only investigates real-life problems, but also helps resolve them. This is of benefit to both industry and TAFE: it improves courses, has the potential to acquaint teachers and lecturers of new developments, and enhances the technical know-how and industry currency of teachers/trainers.

**Selected highlights from our range of initiatives demonstrate the strength and diversity of applied research at Holmesglen.**

## Health industries: a vibrant research programme

Holmesglen's partnership with Healthscope has provided Holmesglen's **Faculty of Health Sciences, Youth and Community Studies (HSYCS)** with the opportunity to enhance its programme of applied research across the faculty leading to the continuing improvement of its teaching programmes in health sciences and to patient outcomes.

Led by Professor Debra Kiegaldie (Healthscope Clinical Chair), a number of research projects have been undertaken or continued during 2022. These include: the Collaborative Online International Learning (COIL) Project; Interprofessional Management of Delirium in the Cardiac ICU; Developing and Evaluating Automation Methods and Tools in Evidence Synthesis; Skills Labs, Building Employer Confidence and Inclusion in Disability, Rehabilitation Technology in Clinical Practice; and an expansion of the integrated practical placement programme for young people with a disability in conjunction with the Royal Children's Hospital.

### The Collaborative Online International Learning (COIL) Project

This research project has evaluated the development, implementation and outcomes of a COIL program in nursing education established between Holmesglen Institute in Melbourne, Australia and Northwestern Polytechnic (formerly Grande Prairie Regional College) Alberta, Canada. The COIL program has created multiple online environments that have facilitated collaboration, the sharing of resources, and the development and implementation of novel educational and academic experiences for students and faculty. Four specific research interventions have been developed:

1. An Online Virtual Community (OVC)
2. Virtual Reality/Virtual Simulations
3. A Virtual Global Classroom (VGC)
4. A Virtual Community of Practice (VCoP).

Leveraging from Holmesglen's expertise in educational technologies, simulation and applied research, the outcomes of the project will profile the organisations to a global audience with a view of attracting overseas talent to collaborate on future innovative research and to build Victoria's brand as a pioneering and high-quality education provider in both vocational and higher education.

#### Industry partner:

Northwestern Polytechnic, Alberta Canada

#### Holmesglen researchers:

Kiegaldie, D., Shaw, L., Ciardulli, M. Kenwell, K.

#### Industry/external collaborator:

Evans, T., Jacobson, J.

#### Duration:

1 year, commencement date 15 October 2021. Completion 2023.

#### Funding:

Veski-Study Melbourne Research Partnership Grant (\$185,000)

The COIL team's applied research project (Collaborative Online International Learning) was acknowledged in February 2023 at a major showcase in Melbourne.

#### Watch the Showcase Video:

<https://www.youtube.com/watch?v=js50yilVVvc>



Simulated nursing ward-Holmesglen.

### Interprofessional management of delirium in the Cardiac ICU

This multi-faceted study will review the literature on delirium in the cardiac ICU, undertake a retrospective audit of delirium at one hospital ICU and develop, implement, and measure outcomes of an interprofessional intervention designed to prevent and manage delirium.

**Industry partner:**

Healthscope Australia, Melbourne Private Hospital

**Holmesglen investigator:**

Kiegaldie, D.

**Industry/external collaborator:**

Williams, F., Farlie, M., Morley, P., Herot, G.

**Commencement date/completion date:**

2019 - 2024

### Developing and evaluating automation methods and tools in evidence synthesis

This project involves developing and evaluating automation methods and tools in evidence synthesis. It includes evaluation of the CONSORT flow diagram work and detailed evaluation to assess the accuracy of the workflow.

**Industry partner:**

EPPI Centre, University College London and Evidence Synthesis, Ireland

**Holmesglen investigator:**

Weerasekara, I.

**Commencement date/completion date:**

2022-2024.

### Victorian Skills Authority Skills Laboratory

This project is a partnership with the Victorian Skills Authority to facilitate Skills Labs that will research, develop and test, through piloted and simulated programs, new ways of determining skills in line with contemporary clinical practices in the Health and Community Services sector and formulating education and training responses. New approaches to skills development for the care economy will be designed.

**Industry partner:**

Victorian Government: Department of Education and Training.

**Grant:**

\$1,000,000

**Holmesglen Investigators:**

Kiegaldie, D., Shaw, L., Ciardulli, M. Kenwell, K.

**Industry/external collaborator:**

Williamson, C., Gabrielle Koutoukidis, G.

**Commencement date/completion date:**

2022-2023.

### Expanding the integrated practical placement program

The expanded project aims to expand the IPP program with other TAFE providers in Melbourne and regional Victoria to increase the employment opportunities for young adults with disability and create a framework and operational model for training providers and partner organisations inclusive of student led disability awareness training. It will also conduct a project evaluation to measure stakeholder outcomes and efficacy of the implementation model work-based environment. Participants are supported to transition into paid employment.

The Integrated Practical Placement (IPP) Program provides young adults with disability the opportunity to complete a course in work education whilst being immersed in an authentic work environment.

**Partners:**

Royal Children's Hospital, Melbourne Health, Monash Active, Bendigo/Kangan Institute, SuniTAFE, Melbourne Polytechnic.

**Duration:**

1 year. NDIS Economic Participation Stream Grant Round 2020-21 (\$265,100)

**Researchers:**

Kiegaldie, D., Davis, J., Kearney, I., Shaw, L., and Forbes-Nicholson, A.

**Commencement date/completion date:**

2020-2024 (delayed due to COVID-19).

### Building employer confidence and inclusion in disability

This project aims to build the confidence and ability of employers to hire, support, and retain employees with disability in a defined geographical/statistical area (Monash). The Project audience is focused on young adults with hidden disabilities, though not restricted to this group.

**Industry partner:**

Monash City Council

**Holmesglen investigator:**

Kiegaldie, D., Kearney, I., and Davis, J.

**Grant:**

\$678,895 (Total and Holmesglen allocation)

**Commencement date/completion date:**

2022-2024

### Neural mechanisms underpinning the effects of cognitive load on postural stability with ageing: the balance and brain study

The primary aim of this pilot study is to determine the differences in PFC activation between varying difficulty cognitive and postural stability dual tasks in two age groups (young and old). A secondary aim is to determine if similar patterns of PFC activation are observed in the younger cohort when balance tasks are sufficiently challenging.

**Funding body:**

The University of Newcastle

**Total Grant amount:**

\$18,229 (Total and Holmesglen allocation)

**Holmesglen Investigators:**

Weerasekara, I.\*

**Industry/external collaborator:**

Suzanne Snodgrass, Jodie Marquez, Peter Stanwell, Sarah Blyton, Nathan Nazum, Frini Karayanidis, Sarah Johnson, Karen Mickle, Mitch Smith, Dr Suzi Edwards and Teo Wei-Peng

**Commencement/completion date:**

2022 (in progress)

### Rehabilitation technology in clinical practice: providing opportunity and evaluating implementation

This study aims to form a collaborative partnership with clinical practice and 'medical tech' industry partners to provide the opportunity for residents of the local community to receive therapy using advanced rehabilitation technologies as part of their clinical care. This will evaluate the way that clinicians implement these therapies in clinical practice, assess health related outcomes, and evaluate therapist and patient perceptions of the therapy. This information will allow researchers to compare the findings from clinically acquired data to that reported in the research literature and develop strategies for both industry and clinicians to facilitate implementation of these types of devices.

#### Funding body:

The University of Newcastle

#### Total Grant amount:

\$9,620 (Total and Holmesglen allocation)

#### Holmesglen Investigator:

Weerasekara, I.

#### Industry/external collaborator:

Jodie Marquez, Luke Wakely and Sarah Blyton

#### Commencement/completion date:

2022 (in progress)

## Leading edge research: construction and the Building 4.0 Co-operative Research Centre

### 2022 is the second full year of Holmesglen's partnership with Building 4.0 CRC.

Holmesglen, along with other organisations across the commercial, university, industry and government sectors are collaborating in research projects to achieve Building 4.0 Co-operative Research Centre's (CRC) goal of changing the building industry through research and innovative technologies. For Holmesglen, research outcomes will focus on the development of training programmes in the use of new technologies (including digital technologies and robotics); innovations to work processes; and policy and regulations improvement. The CRC intends to utilise Holmesglen's extensive workshop facilities and trained technical staff to support trials of improvements to the key building phases.

**This section of the report outlines Holmesglen's involvement in current research projects and the design of new proposals for 2023.**



**Holmesglen's Centre for Energy & Infrastructure, through the leadership of Dr Ross Digby, and in collaboration with the Holmesglen Centre for Applied Research and Innovation under Dr Henry Pook, have been working with partners on a range of research programmes.**

During 2022, three programmes were in varying stages of the research process (planning, implementation, and completion); with a further project in the conceptual stage. These are:

- **Project#2:** 'Automated tracking of construction materials for improved supply chain logistics and provenance – Phase 1 Scoping Study',
- **Project#7:** 'New Technologies, the Future of Work, Skills and Industrial Relations',
- **Project#12:** AR/VR technologies and their application in VET, and
- **Pre-fabrication construction innovation in the building industry** (planning discussions commenced late 2021 and continued into 2022).

### Automated tracking of construction materials for improved supply chain logistics and provenance.

This project examined the development and application of sensor technology in the identification and tracking of construction materials as they progress through the supply chain.

A project outcome included the preparation of a White Paper identifying directions for further research and the production of a 'road map' to a second phase of the research, including recommendations regarding the development of education and training programmes for apprentices, managers, other paraprofessionals, and small medium enterprises (SMEs). There is potential for a further project to use of Holmesglen's stores (e.g., carpentry, plumbing, electrical) as a test bed for the application of any new sensor-based technologies would be beneficial in improving the monitoring of stocks in these areas.

#### Status:

Completed in 2022

#### Project budget:

Cash and in-kind from all partners: \$602,067

#### Holmesglen industry/research advisors:

Centre for Energy & Infrastructure (Dr Ross Digby)

Centre for Applied Research and Innovation (Dr Henry Pook),

#### Partners Research:

Monash University, University of Melbourne and QUT

#### Industry:

Lendlease, Holmesglen, Salesforce, Monash University, University of Melbourne, Queensland University of Technology, MBAV, Bluescope, Sumitomo, Amazon Web Services, Ynomia and VBA

### VR/AR Technologies in Vocational Education and Training

To understand how VR/AR can be more widely applied, this study conducted a systematic literature review to propose the theoretical challenges as well as potential opportunities to transform the VET platform for the construction sector to be more responsive to innovations, such as VR/AR, and thus better meet Australia's future workforce needs. In addition, this research conducted a market survey to review the potential technologies which are available based on VR/AR tools and provide recommendations to match appropriate technologies to training activities.

#### Project budget:

Cash and in-kind from all partners: \$273,830

#### Holmesglen industry/research advisors:

Centre for Energy & Infrastructure (Dr Ross Digby),

Centre for Applied Research and Innovation (Dr Henry Pook), Master Builders Victoria, Monash University and Queensland University of Technology

#### Status:

Completed-final report evaluated in February 2022





Use of new technologies in building construction training

### New technologies, the future of work, skills, and industrial relations (IR)

It is recognised that the development and adoption of new technologies has the potential to unsettle and dislocate the existing workforce with a de-skilling effect for some trade areas in building construction. As a way of minimising the disruptive effect of workplace change on an industry known for its difficult IR and entrenched work practices, the training system needs to be shaped to accommodate new technologies and provide a technology capable workforce upon the completion of training programmes.

This research project aimed to investigate:

- the effect new technologies might have on the building industry's industrial relations, its management structures, jobs, skills, education, training, and workforce composition,
- industry stakeholders' perspectives on workforce change and the application of new technologies; and on cooperation, disruption, productivity, the future of work, as well as 'pain points' envisaged by employers and unions with the introduction of these new technologies,
- how the key players can innovate in terms of more cooperative forms of IR with mutual gains and more voice and goal alignment, and
- how the parties can best work with and try to improve the IR, management, education, and training systems.

#### Project Budget:

Cash and in-kind from all partners over 3 years: \$1,720,730.

#### Duration:

3-years (2021 - 2024)

#### Holmesglen industry/research advisors:

Centre for Applied Research and Innovation. (Dr Henry Pook), A.G. Coombs Pty. Ltd., Holmesglen Institute, Lendlease Digital Australia Pty Limited, Monash University, Queensland University of Technology, The Master Builders Association of Victoria and The University of Melbourne.

**In 2022, the project was reviewed and is to be transferred to Project #49, with a greater focus on workplace relations (see below).**

#### Pre-fabrication construction innovation

Planning is underway on a research proposal to develop and apply pre-fabrication construction technology to building: the project brief and budget are yet to be confirmed. An option under consideration includes: Project#21 "Regulatory Reform for Industrialised Building": (implications of Building 4.0 technologies on work practices, including the role of training), and Exploration of a proposal being developed by CARI: to develop a training centre and/or programme, possibly linked to virtual/augmented technologies and with a prototype of a building used to demonstrate off-site

processes, to meet the changing production and training demands of building construction.

#### Holmesglen industry/research advisors:

Centre for Applied Research and Innovation (Dr Henry Pook) and Centre for Energy & Infrastructure (Dr Ross Digby).

## Other CRC research developments

#### Innovation and safety: industry placement

**opportunity** integration of automation into safety-based training for traffic management, in consultation with industry and focusing, initially, on RII30920 Certificate III in Civil Construction (Traffic Management) stream.

#### Project #49 Implication of Industry 4.0 technologies on work practices

(replaces Project #7 new technologies, work practices, and industrial relations) Project designed to develop understanding of the broader impacts of technological adoption (and related changes to work practices) to predict, inform and design future technologies that maximise desirable work practices and outcomes in the building and constructions sectors. (Dr Henry Pook)

#### Project placement of PhD students through the B4.0 CRC, in consultation with Dr Ross Digby.

## Construction initiatives: the Building Construction Trades and apprenticeship training

#### Innovation projects

Research and innovation are often inextricably linked, with the outcomes of research projects, particularly those related to applied research, leading to improvements in the fields of industry and education and training programmes. It is recognised that innovation encompasses the widespread application of new knowledge and new work processes, often accomplished incrementally, to industry and to training programmes. These innovations may include changes to work processes, the testing and application of improvements to products for industry, improved marketing, and revised training to help introduce these improvements.

Work within the Building Construction Trades (BCT) during 2022 has focussed on the development of several innovation projects that include: sustainability initiatives, automation of industry sectors such as stonemasonry, timber recycling initiatives, and, in an era of skills shortages, measures to improve the attractiveness of the trades for new entrants to the workforce.

#### Audiometry and compliance with hearing protection amongst first year carpentry apprentices

Noise exposure is a common hazard amongst carpenters and hearing loss can occur just after a few years of exposure. This project, conducted by Monash University in collaboration with BCT, aimed to examine the relevance of hearing tests, apprentice behavior in the workplace in regard to PPE, and attitudes of apprentices about noise. Findings from the research may be used to explore possible interventions to make apprentices more aware of hazards, in particular noise. Such findings can also be used to highlight regulations and re-evaluate education.

#### External Investigators (Monash):

Dr Geza Benke and Dr Abhisek Ramroop

#### Holmesglen Investigator:

Elizabeth Jansz



### **Apprenticeship training: Social and Emotional Learning in Vocational and Education Training (VET)**

This research focused on the application of social and emotional learning (SEL) for VET learners in Australia. The study drew upon international best practices in SEL and their possible applicability in an Australian context. Indentured apprentices from traditional trades participated as study participants.

The research made the following recommendations:

- Create new apprentice training practices and learning strategies that incorporate SEL competencies from the syllabus being delivered.
- Cluster the SEL competencies in a project-based activity and use the station rotation model as a teaching-learning method to engage the student, employer, and teacher for summative assessment.
- Use the student-led approach to apply innovative learning to the syllabus by using the gamification of practical subjects to transform the learning experiences of students.
- Engage students and teachers in the culture of SEL by using a case study to show how it can add value to the skills and knowledge.
- Create a collective culture like a community of practice for apprentices where they can collaborate with others about their SEL in training.

#### **Industry partner:**

ISS Fellowship (Australian Italian Foundation)

#### **Holmesglen Investigator:**

Dr Joe Pagnoccolo

#### **Industry/external collaborator:**

ITE Singapore and Institute "De Panfilis - Di Rocco" (Italy), Barcelona Conference on Education (IAFOR)

#### **Completion date:**

September 2022. (delayed by COVID-19)

## **Faculty based research**

### **Early Childhood Education**

#### **Child-centred pedagogy: The Montessori and Reggio Emilia approaches.**

This study focused on two approaches to learning and teaching in early childhood education settings; the Montessori approach and the Reggio Emilia approach. Both are child-centred, and both are based on a constructivist model. There is evidence that children's early literacy and maths skills are supported by these approaches and that there are benefits for their cognitive and social development. Currently, implementation of teaching and learning methods in Victorian early childhood settings varies widely, depending on the type of provider and expertise of staff. Through this fellowship, examples of best-practice models of the Montessori and Reggio Emilia approaches were examined with a view to developing clearer and more targeted course content for early childhood VET and HE programs at Holmesglen. It is anticipated that Professional Learning opportunities centred on these approaches might be provided to staff in Victorian early childhood education settings.

#### **Industry partner:**

ISS Fellowship (Australian Italian Foundation)

#### **Holmesglen investigator:**

Dr Mary Hughes

#### **Industry/external collaborator:**

Universita di Roma, Opera Nazionale Montessori and Loris Malaguzzi International Centre.

#### **Commencement date/completion date:**

2021 - 2022

### **Design**

#### **Traditional craft for contemporary design**

The project investigates the relationship between female embroiderers in rural Pakistan and organisations from the fashion, non-Government and online retail sectors in Pakistan, that seek to support their work. Whilst being informally organised and comparatively undocumented, after agriculture, the craft sector, after agriculture, is Pakistan's second biggest provider of employment, exporting an estimated USD255million worth of goods annually. The activities of the stake holders are diverse; providing vocational training to develop the embroiderers' skills, establishing small home-based businesses and providing e-commerce platforms to market embroiderers' work. Yet others act as subcontractors, mediating between embroiderers and Pakistan's fashion industry. Although most organisations see themselves as supporting the cause of rural craft workers, their efforts can be intermittent and misaligned with craftworkers' actual needs.

#### **Holmesglen investigator:**

Shazia Bano

#### **Commencement date/completion date:**

2019 - 2023

### **Fashion**

#### **AccuMark 3D Beta Testing**

A 'by invitation' program initiated by the software developer to work with selected users in the use and application of 3D avatars in a fashion context. A beta guide is assigned to facilitate the project that involves weekly webinars over 3 months with other global practitioners in a 'community of practice' setting to report on problems, discuss issues and field questions. Project outcomes include in software improvements and knowledge sharing for the benefit of industry and education practitioners.

#### **Holmesglen investigator:**

Sandra Blake

#### **Industry/external collaborator:**

Gerber Accumark Beta

#### **Commencement date/completion date:**

July 2022 - September 2022

## **Information Systems Research**

The technology landscape is constantly changing, and new technologies are emerging all the time. As technology continues to evolve, researching IT helps the industry to drive innovation, provide a competitive advantage, improve efficiency, and support better decision-making. The most prominent IT research trends are the Internet of Things (IoT), Cloud Computing, Edge Computing, Cybersecurity, Artificial Intelligence (AI), Machine Learning (ML), and Blockchain. Holmesglen IT researchers are actively engaged in these research trends, working on several journal articles during 2022 (**see Published Research**).

## Sports Degrees Research

The research conducted by Sports Degrees in 2022 provides valuable insights into the use of social media and marketing trends, independent and intersectional media, and the impacts of COVID-19 on sport events, sport's role in society and the framing of news.

Specifically, the research projects focused on the use of social media by athletes to cultivate their stardom; the impacts of COVID-19 on the perceived importance of sport in society; the impacts of COVID-19 on the Australian Open; athletes' media usage and stories during COVID-19; and trends in Australian independent media to drive intersectional representation; and resulted in a range of publications (see Published Research).

### Sports Degrees

#### **Investigating alternative and independent sports media platforms that cover women's sport**

This project will investigate the lived experiences of those working and/or volunteering in independent, alternative sports media platforms that cover women's sports. The emergence of digital media and its capacity to offer alternative and accessible ways to create and distribute content has seen great shifts in the modern media landscape with sports media no exception.

In the sports media space, specific content is now being created by passionate fans, bloggers and aspiring journalists, adding to an already oversaturated field of sports news, opinion and analysis. As oversaturated as it may be, this space is also affording opportunities for those traditionally marginalised by mainstream media to cover, champion and advocate for sports, athletes and issues that are not reflected in traditional sports media. How independent content creators do this is an important area for research attention as these platforms not only set out to redress the lack of diversity and intersectional approaches to traditional sports media, they often also seek ways to drive even more change as they work on becoming more representative, not only in the content they produce but also in the voices they include and amplify.

This is an interesting and important movement to interrogate as these platforms are predominantly unfunded passion projects created by those marginalised groups who have not been afforded opportunities in traditional media spaces but continue to produce largely unpaid work in the hope of driving change from a bottom-up approach.

#### **Funding body:**

Sport Management Association of Australia and New Zealand

#### **Total Grant amount:**

\$5,000

#### **Holmesglen Investigator:**

Dr Sam Duncan

#### **Industry/external collaborator:**

Dr Kasey Symons, Swinburne University and four independent media organisations: The Outer Sanctum Podcast, Beyond90, Netball Scoop and Siren Sport

#### **Commencement/completion date:**

2022 - 2023

## Creative Works

For the first time, the report includes: the creation of new knowledge and/or the use of existing knowledge in a new and creative way to generate new concepts, methodologies and understandings. This may include original creative work, live performances, recorded creative work and public exhibitions.

### Fashion

#### **"Dreaming Aura" Live launch of a collection of garments at Australian Fashion Week, Sydney, 15 May 2022**

"Roused by a longing and nostalgia for the dance floor Erik Yvon's next collection is inspired by the sense of freedom and exhilaration; the joy of being amongst their community post lockdown. This range is a conversation of queer love, & party highs and lows and a modern take on relaxed resort wear accentuated with refined fabrics and heightened with bold graphics. The collection began by working closely with Artist and Illustrator Lily Parvati. Yvon was inspired by her artwork of illustrated native flora and the cultural aspect of the works with Parvati's Indonesian background. Together they developed a series of artworks to be used as prints within the collection. The floral elements are composed in a manner so that the illustration becomes an amorphous play of colour and form."

Created by Erik Yvon

### Health (HSYCS-Healthscope Clinical Chair)

#### **"Indigenous Health Scenario: Bernadette's Journey in Healthcare": a recorded digital virtual reality video, October 2022.**

Working with a small indigenous community in Alberta, Canada, this creative work involved the design and production of a virtual reality education module using 360-degree videography of a patient journey into a healthcare episode. Outputs included a script, storyboard, charting of branching videos and VR production.

Created by Evans, T. (Canada), Kiegaldie, D., Ciardulli, M.

## Establishing a research profile: Holmesglen participation in conferences, 2022

#### **The Centre has worked closely with faculties and teaching departments to promote and co-ordinate the involvement of staff researchers in conferences showcasing applied research across the vocational and professional education and training sector.**

Holmesglen researchers gave presentations (keynote speaker, plenary session, round table discussion, parallel paper presentation, poster, workshop) at a range of virtual and in-person conferences during 2022. This included AVETRA (Australian Vocational Education and Training Research Association) conferences; NCVET (National Centre for Vocational Education Research) Conferences; OctoberVET at Holmesglen; and other conferences, both national and international.

## OctoberVET at Holmesglen: part of the research landscape.

OctoberVET is an important opportunity for Holmesglen researchers, industry, research-based organisations and other TAFE's to share research, contribute to the improvement of teaching and learning and provide the groundwork for further research and innovation.

### Recent OctoberVETs:

#### **OctoberVET 2019 at Holmesglen: 'Showcasing Applied Research in TAFE'.**

The conference showcased a range of research projects and applied research partnerships between TAFE and organisations such as EastLink and the Royal Children's Hospital; research snapshots from leading applied researchers, demonstrations of new technologies such as virtual reality and their application to education and training demonstrated the TAFE's potential contribution to the development of industry and 'cutting edge' training programmes.

#### **OctoberVET 2020 at Holmesglen: 'Applied Research in TAFE during a time of pandemic: the importance of industry partnerships.'**

This virtual conference drew upon the theme of applied research in TAFE during a time of pandemic and reinforced the importance of industry partnerships. Speakers emphasised the view that TAFE has the capacity to play a significant role in the development of industry supported innovation and meeting future skills needs: rather than seeing the pandemic as an impediment to change, TAFEs could embrace these new challenges and opportunities by capitalising upon the possibilities presented by new technologies and increased digitalisation across many industry sectors.

#### **The 2021 OctoberVET conference: 'Applied Research in TAFE: Current practice and future opportunity.'**

This conference was based on investigations of real-life problems that are of benefit to both industry and TAFE and explored the possibilities and dimensions for future applied research: in particular, the ways in which research and innovation may be channelled into knowledge sharing and technology transfer in collaboration with industry and community, and in the design and delivery of education and training programmes to meet future skills needs

#### **The 2022 OctoberVET conference: Conducting applied research: an invitation to researchers in TAFE**

The 2022 OctoberVET provided a programme of presentations and workshops focussing on issues related to the conduct of applied research.

- Presenting at a conference and/or having my work published: what do I need to know?(Dr Sam Duncan).
- The research journey: experiences of an early-career researcher. (Warren Guest).

Designed for researchers currently engaged in applied research or who are thinking about doing research for the first time, the conference focused on practical issues related to applied research.

Presentations included:

- What is applied research? (Dr Henry Pook, Andrew Williamson).
- Developing a research proposal? (Professor Debra Kiegaldie and Dr Louise Shaw).
- What is the purpose of a literature review/scoping exercise, and what tools and resources are available to help me? (Dr Louise Shaw, Dr Yvonne Hamey).
- Working with industry and research-based organisations on research projects? What projects are underway in health and building construction? Professor Debra Kiegaldie and Dr Ross Digby)



Holmesglen presenters at OctoberVET



## Conducting Applied Research: An Invitation to Researchers in TAFE: Thursday 27<sup>th</sup> October, 9:30am am-3:30pm

We invite you to join **Holmesglenn's Centre for Applied Research and Innovation for OctoberVET 2022**. The programme offers a range of presentations that focus on the conduct of applied research where presenters share their insights across the research life cycle:

9:30 am: Welcome: Andrew Williamson (AVETRA)

9:40 am: What is applied research? (Dr Henry Pook/Andrew Williamson)

10:25am: Developing a research proposal (Professor Debra Kiegaldie, Dr Louise Shaw).

11:10-11:20 am: Break

11:20am: What is the purpose of a literature review/scoping exercise: what tools and resources are available: (Dr Louise Shaw, Dr Yvonne Hamey).

12:05: Presenting at a conference and/or having my work published: what do I need to know? (Dr Sam Duncan)

12:50-1:15 pm: Break

1:15 pm: Working with industry and research-based organisations on research projects: what projects are underway in health and building construction? (Dr Ross Digby, Professor Debra Kiegaldie).

2:30pm: The research journey: experiences of an early career researcher (Warren Guest)

3:15pm: Close

**Presenters:** Andrew Williamson, Dr Henry Pook, Dr Ross Digby, Professor Debra Kiegaldie, Dr Louise Shaw, Warren Guest, Dr Yvonne Hamey

The conference will be conducted both face to face at the Chadstone Campus, Holmesglenn Institute, Lecture Theatre, C1.1.33, and via Webex.

### Registration for all participants.

<https://holmesglenn.webex.com/holmesglenn/j.php?RGID=r11e71219aeec98cbb23072e991c74a64>

Dr Henry Pook, Director, Centre for Applied Research and Innovation.  
Holmesglenn Institute.



## Conference Presentations

- Benli, F. 'Enhancing Experiential Learning in a Smart Flipped Classroom: A Case Study' at Business Process Simulation Modeling and Analysis, Melbourne (Online), (February 2022),
- Benli, F. 'Using Scrum in an Online Smart Classroom Environment: A Case Study' at Business Process Simulation Modeling and Analysis, Melbourne (Online), (February 2022).
- Ciardulli, M & Theron, D., 'Monash Health APA Day Allied Health Assistants and the Simulated Participant program', (16 November 2022).
- Ciardulli, M & Pillay, 'Digital Health care for the Future', KATALIS, Indonesia, Keynote speaker, (3 February, 2022).
- Ciardulli, M & Hall, M, ANZAHPE Festival, 'Intraprofessional Learning: A unique experience for Diploma and Bachelor of Nursing Student', Keynote speaker (n.d)
- Ciardulli, M & Evans, T., 'Collaborative Online International Learning: COIL'. ASPIRE, Keynote speaker, (26 August, 2022).
- Chung, J. 'Do I really belong here?', Australian Library and Information Association, Canberra. Concurrent speaker, (May 2022).
- Dempster, P., Australasian College of Infection Prevention and Control (ACIPC), Sydney,. Results of Minor Thesis: 'Australian emergency nurses' experiences of work, using personal protective equipment during the COVID-19 pandemic. A qualitative study'. Keynote speaker ( Note the paper won the Elaine Graham Robertson Award – 'Best presentation/free paper'), (14-16 November, 2022).
- Digby, R. with Rashidi, Ali. (Monash), 'Building the reality of a partnership between a TAFE Institution and Co-operative Research Centre (CRC)', AVETRA 2022: Are we there yet?, 28/29/April2022
- Digby, R., Kiegaldie, D. 'Working with industry and research-based organisations on research projects: what projects are underway in health and building construction?' OctoberVET, Presentation. Holmesglen, (27 October 2022).
- Duncan, S. 'Presenting at a Conference/Having my work published', OctoberVET, Presentation, Holmesglen, (27 October, 2022).
- Duncan, S. "Nothing about us, without us": A case study of the Outer Sanctum podcast and trends in Australian independent media to drive intersectional representation and, Fourteen days: Athletes' media usage and stories in hard quarantine during COVID-19. North American Society for the Sociology of Sport Conference. Las Vegas, Nevada, USA, presentation, (November 2022).
- Evans, T. (Canada presenting), D. Kiegaldie, D. Ciardulli, M., Collaborative Online International Learning: A Canada-Australia experience, NETNEP 2022, 8th International Nurse Education Conference, Poster. (19-20 October 2022).
- Guest, W. 'The research journey: experiences of an early career researcher', OctoberVET, Presentation, Holmesglen, (27 October 2022).
- Hughes, M. 'Qualitative single-case study as a research methodology in a mixed sector institute'. AVETRA Conference: Are we there yet?, 2022, Melbourne, presentation, (29 April 2022).
- Kiegaldie, D. 'Educating clinicians about falls prevention: Pitfalls and possibilities', Keynote Speaker Victorian Falls Prevention Workshop (Monash Partners), Melbourne, Australia (n.d)
- Kiegaldie, D. and Shaw,L., 'Developing a Research Proposal', OctoberVET, Presentation, Holmesglen, (27 October, 2022).
- Meeking, C. & Meeking, M. 'An LMS library embed: Partners in the teaching and learning space', Victorian Association of TAFE Libraries, Keynote, (August 2022).
- Pook, Henry. 'Applied Research at Holmesglen: an Introduction', workshop, Holmesglen, 17/02/2022.
- Pook, Henry, 'Partnerships as a driver of VET's research profile: a case study of co-operative research to transform the building industry', AVETRA 2022: Are we there yet? National (virtual) conference, Workshop, (28-29 April2022).
- Pook, Henry, 'Local-industry/research institutions, Technological change, workplace relations, and the role of education and training', B4.0 CRC, Monash (Caulfield), Presentation, (24-May-2022).
- Pook, Henry, 'Bringing the Trades In: new technologies, the 'trades', and the significance of B4.0 CRC research'., ASPIRE, Holmesglen, Presentation, (24/08/2022).
- Pook, Henry, 'Building Applied Research at Holmesglen', InterTAFE Webinar, (13/09/2022).
- Pook, Henry, 'What is Applied Research?' OctoberVET, Presentation, Holmesglen, (27 October 2022).
- Pook, Henry., Digby, R. 'Holmesglen Institute and Building 4.0 CRC: A Case Study of Co-Operative Research to Transform the Building Industry', TAFE Directors Convention 2022, Presentation, Adelaide, (16/11/.2022).
- Sarma, SriGowri, 1. ADRC Online seminar organized by Asian Disaster Reduction Centre (ADRC); Kobe; Japan (online); on "Promoting Disaster Mitigation Strategies through investment and economic development for community resilience". Invited Commentator (Plenary), (March- April 2022).
- Sarma, SriGowri, 'Know Your Disasters: Disasters and Economies': Organized by Government of India and UN-DRR, ONLINE (Zoom), , Invited Commentator, Plenary, (15 October & 12 November 2022).



- Sarma, SriGowri, “BOSAI KOKUTAI 2022”; Organized by Government of Japan & Asian Disaster Reduction Centre (ADRC) ONLINE (Zoom), Invited Commentator, Plenary, (22-Oct-2022).
- Sarma, SriGowri, ‘Shaping the Future Dialogue Between Philosophy and Science in World facing War, Pandemic and Climate Change’. “TOKYO Forum 2022”: The Tokyo University, Tokyo, Japan and ONLINE, Invited commentator, Plenary, ( 1- 2 December 2022).
- Shaw, L & Hamey, Y. ‘ What is the purpose of a literature review/scoping exercise: what tools and resources are available?’ OctoberVET, Keynote speaker (27October 2022).
- Weerasekara, I. 3rd EVBRES conference, Norway (Online conference) ‘Taking the Lead Towards a Successful Story: Academic Recognition of Systematic Reviews and the Evidence-based Research (EBR) Approach in Sri Lankan Universities’, (6-7 October 2022).
- Williamson, A., (Holmesglen Institute), Baldock, Shannon., (TAFE SA ), Dr John Flett, J. (Southwest TAFE)., ‘Applied Research and Innovation in TAFE - an international comparison’, AVETRA 2022: Are we there yet?, Workshop, 28/29 April, 2022,
- Williamson, Andrew., Digby, Ross. and Pook, Henry. Poster presentation drawing together the recent AVETRA Conference presentations to develop a poster to be presented by Andrew Williamson at the WFCP World Congress in Spain: ‘Building the reality of a partnership between a TAFE Institution and Co-operative Research Centre (CRC)’: Dr Ali Rashidi, Monash University and Dr Ross Digby, Holmesglen Institute and ‘Partnerships as a driver of VET’s research profile: a case study of co-operative research to transform the building industry’: Dr Henry Pook, Holmesglen Institute. Poster/ WFCP World Congress, San Sebastian Spain, (June 15 – 17, 2022).
- Williamson, Andrew, ‘What is Applied Research?’ OctoberVET, Presentation Holmesglen, (27 October 2022)

## Published Research

**Holmesglen researchers seek to report their work through a range of publications to inform discussion, contribute to the improvement of teaching and learning, and provide the groundwork for further research and innovation.**

### Publications 2022

Holmesglen researchers seek to report their work through a range of publications to inform discussion, contribute to the improvement of teaching and learning and provide the groundwork for further research and innovation.

#### Business, Design and Information Technology

- Parvin, S. (2022). Big Data Analytics and IoT for Personalised Healthcare: Opportunities and Challenges, International Journal of Electrical and Computer Engineering (IJECE), Vol. 13, No. 4,(2023)
- Parvin, S. (2022). ‘Framework to Maintain Specialisations in a General Degrees Structure: An economical high-value degree structure’, International Journal of Asian Education Vol. 3 No. 2 (2022)
- Singh,C. Thakkar, R., and Warraich, J. (2022). ‘Social Media-Based Surveillance Systems for Healthcare using Machine Learning’. European Journal of Engineering and Technology Research. 7, (6), 21–28. DOI: <https://doi.org/10.24018/ejeng.2022.7.6.2914>
- Singh, C. Thakkar, R., and Warraich, J (2022). ‘Blockchain in Supply Chain Management’. European Journal of Engineering and Technology Research. 7, (5), 60–69. DOI: <https://doi.org/10.24018/ejeng.2022.7.5.2888>
- Singh, C. Wibowo, S., Grandhis, S., and Imam, T. (2022). ‘A Deep Learning Approach for Sentiment Analysis of COVID-19 Reviews’. Applied Sciences, 12(8), p.3709
- Chetanpal Singh, Ishtiaque-Al-Mahmood, Mohimem-Al-Tahsin, (2022) ‘Novel Approach to Secure Websites with Machine Learning Classifiers’, Asian. Asian Journal of Social Science Management Technology.4(2): 152-176
- Singh, C. (2022). ‘Machine Learning Applications Related to Medical Predictions’, Asian Journal of Social Science Management Technology’ 4(2): 127-144.
- Venkatraman, S. and Parvin, S., (2022). ‘Developing an IoT Identity Management System Using Blockchain” MDPI Systems Journal. 10(2), 39; <https://doi.org/10.3390/systems10020039>.

#### Centre for Applied Research and Innovation

- Pook, H. (2022). Work and labor relations in the construction industry: an international perspective, Labour and Industry, 32:3, 334-336, DOI: [10.1080/10301763.2022.2034276](https://doi.org/10.1080/10301763.2022.2034276).

#### Education, Service Skills and Environment.

- Benli, F., Venkatraman, S., Wei, Ye., Wahr, F. (2022). Enhancing Experiential Learning in a Smart Flipped Classroom: A Case Study, World Academy of Science, Engineering and Technology International Journal of Educational and Pedagogical Sciences Vol:16, No:9.
- Hughes, M., Kilderry, A. & Keamy, K. (2022). Shadowing methodology and the role of the Educational Leader. Early Years: An International Research Journal. DOI: [10.1080/09575146.2022.2084512](https://doi.org/10.1080/09575146.2022.2084512).



- Venkatraman, S, Benli, F., Wei, Y., and Fiona Wahr, F. (2022) Smart Classroom Teaching Strategy to Enhance Higher Order Thinking Skills (HOTS)—An Agile Approach for Education 4.0. *Future Internet* 14, no. 9: 255. <https://doi.org/10.3390/fi14090255>.

### **HSYCS-Healthscope Clinical Chair**

- Bandara EMIA, Kularathne WNI, Brain K, Weerasekara I. (2022). Safety and efficacy of therapeutic taping in primary dysmenorrhea: a systematic review and meta-analysis. *Sci Rep.* 2022 May 3;12(1):7146. doi: 10.1038/s41598-022-11034-w.
- Bohatko-Naismith J, McCormack L, Weerasekara I, James D, Marley J. (2022). Health screening questionnaires used in the management of mental distress acquired during an injured worker's return to work: A scoping review. *Work.*;72(1):75-90. doi: 10.3233/WOR-205027.
- Chao V, Ong C, Kiegaldie D, Nestel D. (2022). Learning and Teaching in the Operating Room: A Surgical Perspective. *Journal: Clinical Education for the Health Professions.* 1-24.
- Heng, H.; Kiegaldie, D.; Shaw, L.; Jazayeri, D.; Hill, A.-M.; Morris, M.E. (2022). Implementing Patient Falls Education in Hospitals: A Mixed-Methods Trial. *Healthcare*, 10, 1298. <https://doi.org/10.3390/healthcare10071298>.
- Heng H, Kiegaldie D, Slade SC, Jazayeri D, Shaw L, et al. (2022) Healthcare professional perspectives on barriers and enablers to falls prevention education: A qualitative study. *PLOS ONE* 17(4): e0266797. <https://doi.org/10.1371/journal.pone.0266797>
- Kiegaldie, D., Pepe, A., Shaw, L. et al. (2022). Implementation of a collaborative online international learning program in nursing education: protocol for a mixed methods study. *BMC Nursing* 21, 252 (2022). <https://doi.org/10.1186/s12912-022-01031-9>
- Kiegaldie, D., Shaw, L., Hunter, S., Davis, J., Siddel, H., & O'Brien, M. (2022). An integrated practical placement programme for students with disability: A pilot study. *Journal of Intellectual Disabilities*, 0(0). <https://doi.org/10.1177/17446295221114490>
- Morris ME, Webster K, Hill A.M, Mc Phail, S, Haines, T... Kiegaldie, D. et al. (2022). Interventions to reduce falls in hospitals: a systematic review and meta-analysis. *Age & Ageing*: 51: 1–12. <https://doi.org/10.1093/ageing/afac077>
- Pathirathna ML, Nandasena HMRKG, Atapattu AMMP, Weerasekara I. (2022). Impact of the COVID-19 pandemic on suicidal attempts and death rates: a systematic review. *BMC Psychiatry*. Jul 28;22(1):506. doi: 10.1186/s12888-022-04158-w.
- Pathirathna ML, Samarasekara BPP, Dasanayake TS, Saravanakumar P, Weerasekara I. (2022). 'Adverse Perinatal Outcomes in COVID-19 Infected Pregnant Women: A Systematic Review and Meta-Analysis'. *Healthcare (Basel)*. Jan 20;10(2):203. doi: 10.3390/healthcare10020203.
- Prabani KIP, Weerasekara I, Damayanthi HDWT. (2022). COVID-19 vaccine acceptance and hesitancy among patients with cancer: a systematic review and meta-analysis. *Public Health*. 2022 Nov;212:66-75. doi: 10.1016/j.puhe.2022.09.001.
- Senarath ID, Chen KK, Weerasekara I, de Zoete RMJ. (2022). Exercise-induced hypoalgesic effects of different types of physical exercise in individuals with neck pain: A systematic review and meta-analysis. *Pain Pract.* 2022 Jul 23. doi: 10.1111/papr.13150. Epub ahead of print.
- Shaw, L., Jazayeri, D., Kiegaldie, D., Morris, M.E. (2022) Implementation of virtual communities of practice in healthcare to improve capability and capacity: A 10-year scoping review. *International Journal of Environmental Research and Public Health*. Special issue: "Strengthening Healthcare Systems and Services through Intersectoral and Interprofessional Partnerships". *Int. J. Environ. Res. Public Health* 2022, 19(13), 7994; <https://doi.org/10.3390/ijerph19137994>. PMID: 35805649
- Shaw, L., Kiegaldie, D., Heng, H., & Morris, M. E. (2022). Interprofessional education to implement patient falls education in hospitals: Lessons learned. *Nursing Open*, 00, 1– 12. <https://doi.org/10.1002/nop2.1276>
- Weerasekara I, Durage LM, Devane D, Lund H. (2022). Academic Recognition of Systematic Reviews and the Evidence-based Research Approach in Postgraduate Health and Clinical Sciences in Sri Lanka - Can the University of Peradeniya Take the Lead?. *Sri Lankan Journal of Health Sciences*. 2022;1(1):60–2. DOI: <http://doi.org/10.4038/sljhs.v1i1.31>
- Weerasekara I, Osmotherly PG, Snodgrass SJ, Walmsley S, Tessier J, Rivett DA. (2022). Feasibility of Using Detuned Laser as a Placebo In Manual Therapy Research: An Analysis of Participant Perceptions. *J Manipulative PhysiologyTher.* 2022 Feb;45(2):163-169. doi: 10.1016/j.jmpt.2022.04.001.

### **Library**

- Meeking, C. (2022) User centred approach. *Incite*, 43(5), 26.
- Meeking, M., & Meeking, C. (2022). Embedded library support within TAFE and dual sector courses for improved learner support and visibility: An emerging opportunity. *Journal of the Australian Library and Information Association*, <https://doi.org/10.1080/24750158.2022.2115584>

## Sports Degrees

- Duncan, S. (2022). Applying Dyer's Star Theory to Sport: Understanding the Cultivation of Athlete Stardom. *Physical Culture and Sport. Studies and Research*, 94(1) 35-45. <https://doi.org/10.2478/pcsr-2022-0004>.
- Duncan, S. & Breitbarth T (2022). Understanding the 2021 Australian Open through an Elias lens: a case of tension, conflict and athlete outsiders. *Sport in Society*. DOI: 10.1080/17430437.2022.2118578
- Duncan, S. (2022). No Vax, No Entry: Understanding Australia's Rejection Of Novak Djokovic. *Sport, Ethics and Philosophy*. DOI: 10.1080/17511321.2022.2125560
- Duncan, S. (2022), 'Fourteen days: Athletes' media usage and stories in hard quarantine during COVID-19', in Pederson, P. (ed). *Research Handbook on Sport and COVID-19*. Cheltenham: Edward Elgar Publishing
- Symons, K., Duncan, S., & Sherry, E. (2022). Brief Research Report: "Nothing About Us, Without Us": A Case Study of the Outer Sanctum Podcast and Trends in Australian Independent Media to Drive Intersectional Representation. *Frontiers in sports and active living*, 4, 871237. <https://doi.org/10.3389/fspor.2022.871237>

## Student Engagement and Success

- Hosking, M. (2022), 'A toolkit for establishing student representation in TAFE' <https://studentvoiceaustralasia.com/reports-publications>

## The Holmesglen Human Research Ethics Review Panel (HRRP)

The Holmesglen Human Research Ethics Review Panel (HRRP) supports the advancement of our research programmes by ensuring that researchers conform to the ethical requirements and standards of the National Statement on Ethical Conduct in Human Research (2018) and the Australian Code for the Responsible Conduct of Research (2007). The Panel meets five to six times a year to review internal and external applications for research undertaken at Holmesglen. This important role ensures the well-being of all stakeholders involved and safeguards the standards and reputation of the Institute in matters of academic and professional practice related to research. The Panel also provides guidance in relation to the conduct of research and works with prospective researchers on the development of their ethics applications.

Applications reviewed in 2022 included "Investigating the effects of intra-professional learning in nursing education: a longitudinal study" and 'Clinical placement learning experiences of nursing students and the impact of the COVID-19 pandemic'.

(by Dr Estelle Irving)

### 2022 membership:

- Dr Henry Pook (Chair, Centre for Applied Research and Innovation),
- Dr Estelle Irving (OTL member and Secretariat),
- Dr Geoff Beeson (External academic),
- Karen King (Employee with research experience),
- Gordon D'Rosario (Manager, Student well-being).

## Theses passed for Higher Degrees: 2020-2022

**Holmesglen staff have completed original research in fulfillment of the requirements of the degree of Doctor of Philosophy (LaTrobe University) and Doctor of Education (University of Canberra).**

Guest, W. Apprenticeship training curriculum: examining its negotiated design and the ensuing effects on learner engagement. PhD Thesis, LaTrobe University, 2022.

Digby, R., *Entrepreneurial Leadership in the Mixed Sector Provider*, EdD, University of Canberra, 2021

Farnes, T., *An exploration of workplace tension: perspectives of VET and Higher Education teaching staff in a mixed sector TAFE Institute in Australia*, EdD, University of Canberra, 2020.

Koutoukidis, G., *The role of interprofessional education in vocational and higher education*, EdD, University of Canberra, 2020.

## Research supervision

**During 2022 Holmesglen research staff provided academic supervision to a number of students (undergraduate, graduate or post-doctoral) at universities, including: the University of Melbourne, the University of Newcastle, Swinburne University, La Trobe University, Universiti Sains Malaysia, and the University of Peradeniya.**

The following identifies the supervisor's Holmesglen department, the name of the supervisor, the course/degree, and the candidate's university.

### **CAIT (Computing and Information Technology)**

Kussay Al-Zubaidi  
PhD  
Universiti Sains Malaysia

### **CAIT (Computing and Information Technology)**

Kussay Al-Zubaidi  
PhD  
Universiti Sains Malaysia

### **HSYCS (Health Sciences, Youth and Community Studies) - Healthscope Clinical Chair**

Kiegaldie, D.  
PhD  
LaTrobe University

### **HSYCS-Healthscope Clinical Chair**

Kiegaldie, D.  
PhD  
Swinburne University

### **HSYCS**

Weerasekara, I.  
PhD  
University of Newcastle

### **HSYCS**

Weerasekara, I.  
M.Phil  
University of Peradeniya

### **HSYCS**

Weerasekara, I.  
M.Phil  
University of Peradeniya

### **HSYCS**

Weerasekara, I.  
Honours  
the University of Newcastle

### **HSYCS**

Weerasekara, I.  
Honours  
the University of Newcastle

### **HSYCS**

Weerasekara, I. Honours  
University of Peradeniya

### **HSYCS**

Weerasekara, I. Honours  
University of Peradeniya

### **HSYCS**

Shaw, L.  
M.Clinical Education  
the University of Melbourne

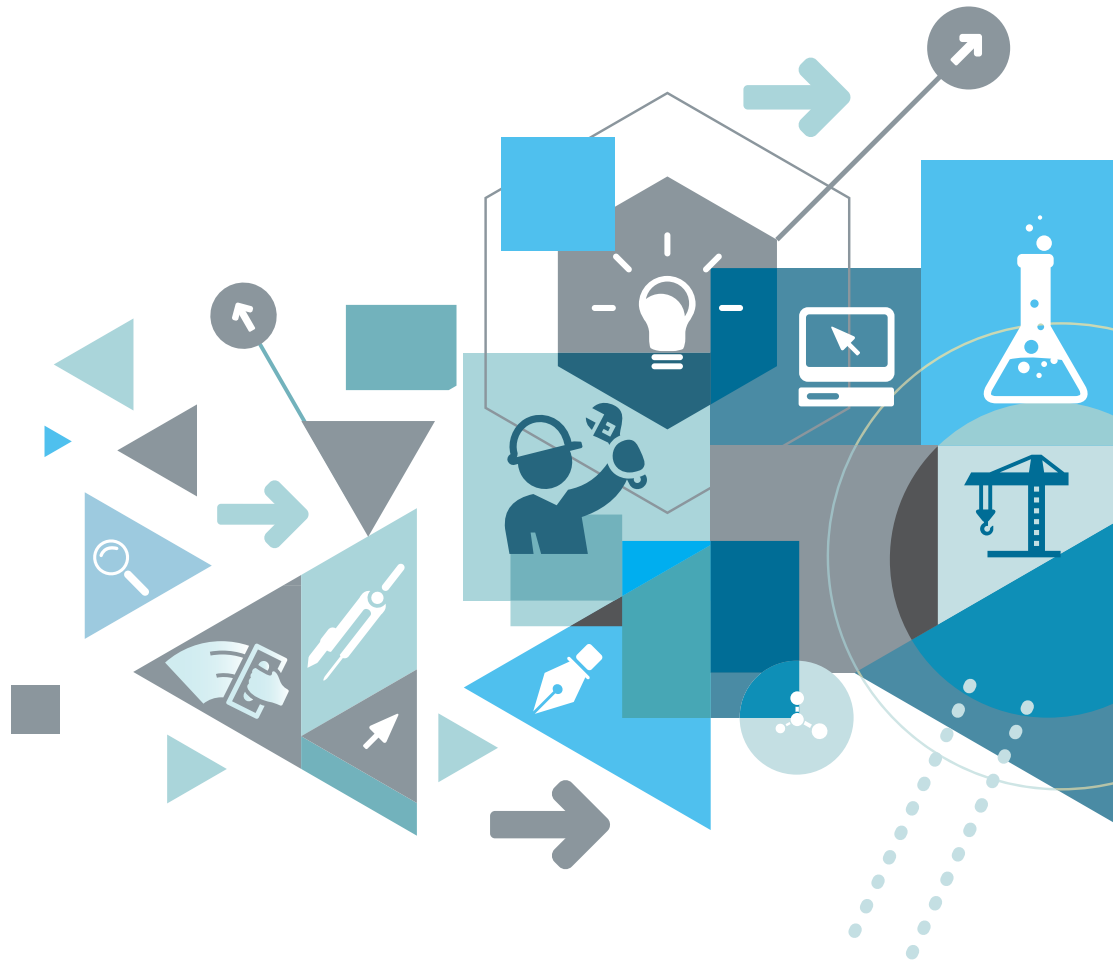


**Contact us**

For business and the community sector we are on hand to examine the potential benefits of partnering with Holmesglen and to evaluate how this would assist in improving the competitiveness, productivity, efficiencies, and/or commercial outcomes of your company or organisation.

If you are keen to know more about Holmesglen research and how it can help your business, education provider or community organisation please contact:

**Dr Henry Pook, Director  
The Holmesglen Centre for  
Applied Research and Innovation  
E: [henry.pook@holmesglen.edu.au](mailto:henry.pook@holmesglen.edu.au)  
T: + 61 3 9564 1886**





**The Holmesglen Centre for Applied Research and Innovation**

Building 6, Level 5

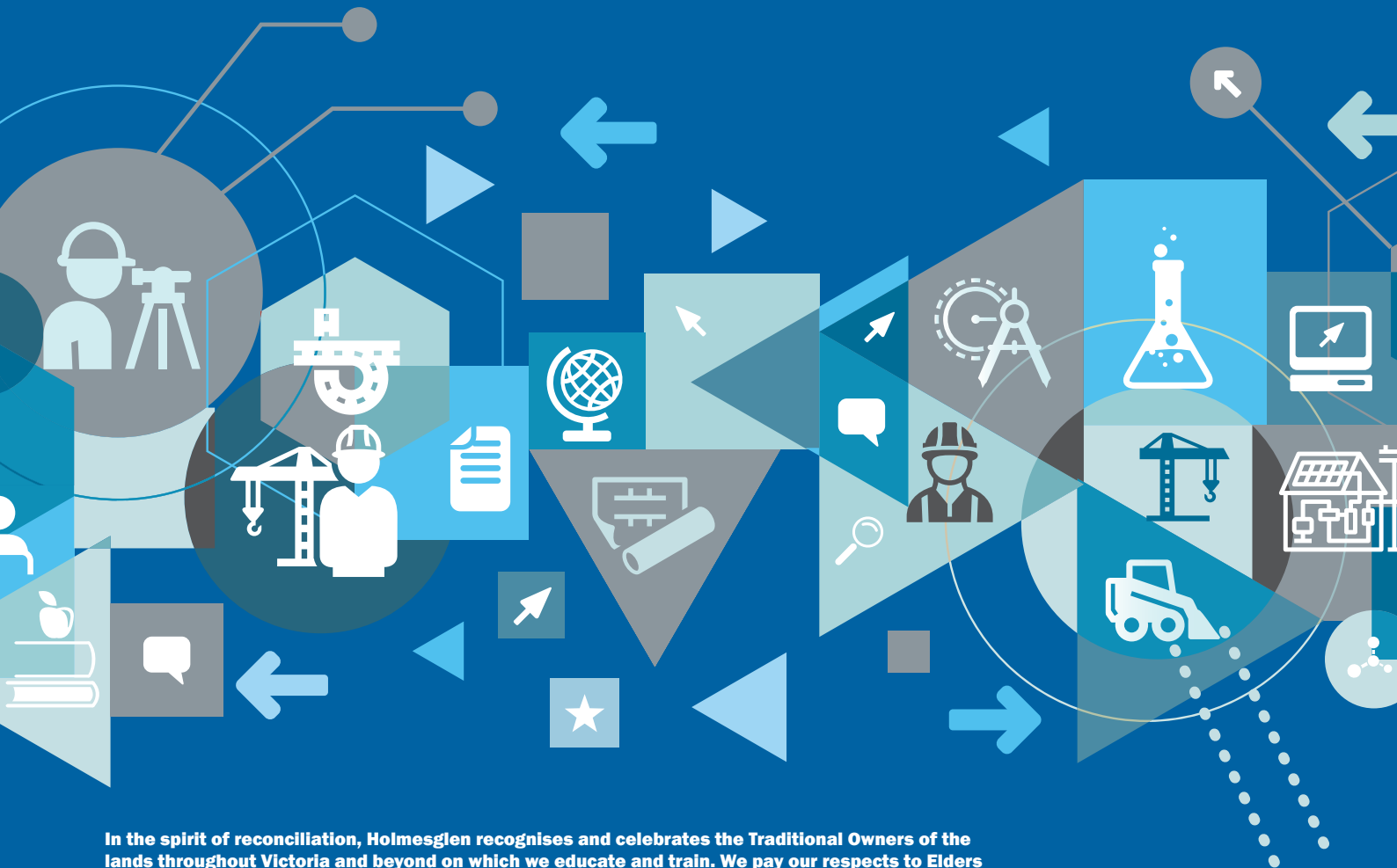
Chadstone Campus, Holmesglen Institute

E: [appliedresearch@holmesglen.edu.au](mailto:appliedresearch@holmesglen.edu.au)

T: + 61 3 9564 1886

W: [holmesglen.edu.au/About-Us/Applied-Research-and-Innovation](https://holmesglen.edu.au/About-Us/Applied-Research-and-Innovation)

© Holmesglen Institute 2023



**In the spirit of reconciliation, Holmesglen recognises and celebrates the Traditional Owners of the lands throughout Victoria and beyond on which we educate and train. We pay our respects to Elders past and present and acknowledge our emerging leaders.**